



Main Features:-

- ◆ Swing Check Valve
- ◆ 1/2" to 2" (80212N—NPT thread)
- ◆ Made of Stainless Steel 1.4408
- ◆ Working Temperature to + 180C *
- ◆ Installed in horizontal or vertical

*Temperature and pressure determined by valve body, seat etc.



SERIES: 80212

MANUFACTURER: **GENEBRE**

Suitable Applications & Approvals:



HVAC



OIL



GAS



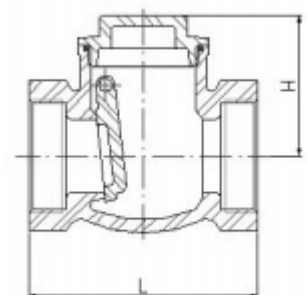
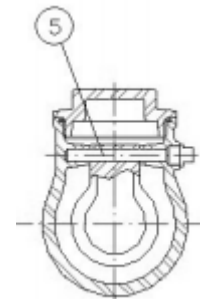
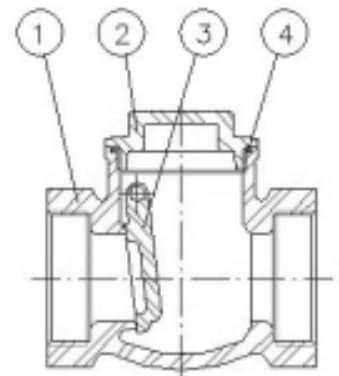
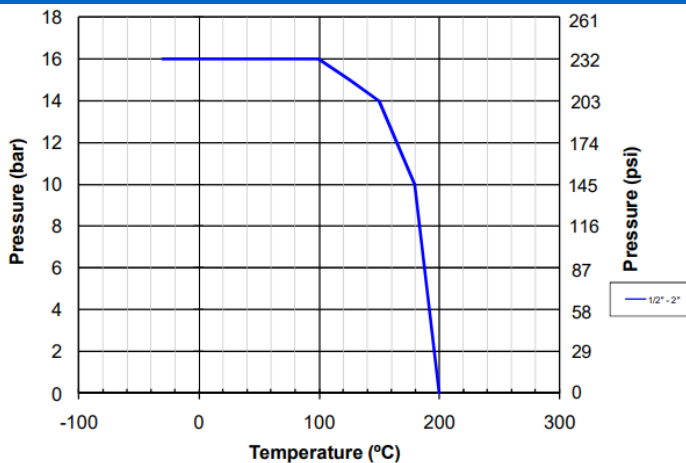
INDUSTRY

VALVE MATERIALS & DIMENSIONS

ITEM	SECTION	MATERIAL	ADDITIONAL INFO / OPTIONS
1	Body	SS 1.4408	Shot blasting
2	Cap	SS 1.4408	Shot blasting
3	Disc	SS 1.4408	n/a
4	Gasket	PTFE	n/a
5	Stem	SS 316	n/a

REF	SIZE	PN	H	L	Kg	Kv Value
80212-04	1/2"	16	44	65	0.312	2.2
80212-05	3/4"	16	53	80	0.49	4.4
80212-06	1"	16	58	90	0.724	8.2
80212-07	1 1/4"	16	62	105	1.042	16.4
80212-08	1 1/2"	16	73	120	1.65	24.1
80212-09	2"	16	78	141	2.392	44.2

PRESSURE AND TEMPERATURE CHART



T +44 (0)1386 552369

E sales@allvalves.co.uk

W www.allvalves.co.uk

F +44 (0)1386 554227